



SHELTERCRAFTS
CONSULTANTS
LTD

perfecting
the art of
living.

sheltercrafts.com



Core Values

Creativity
We use imagination to create original ideas, also thinking out of the box in response to our clients brief.

Integrity
Guided by professional and life ethics, we strive for openness and transparency from conception management to delivery

Innovation
As innovation is crucial to the continuing success of every organization: we constantly attempt to find better solutions to our design challenges brief through technology and constant updating of our professional skills base.

Client Service
We go beyond the ordinary to deliver exceptional service that exceeds the expectation of our clients.

Team Work
We believe that team effort produces the best results that's why we collaborate effectively to achieve top notch results and also satisfy our clients in the process.

perfectingtheartofliving|sheltercrafts.com01

Mission

At Sheltercrafts Consultants Limited, we strive to create exceptional experiences within the built environment. Leveraging our understanding of the role the built environment has on man; we create quality space for living, work and play which ultimately help shape the quality of life we live.

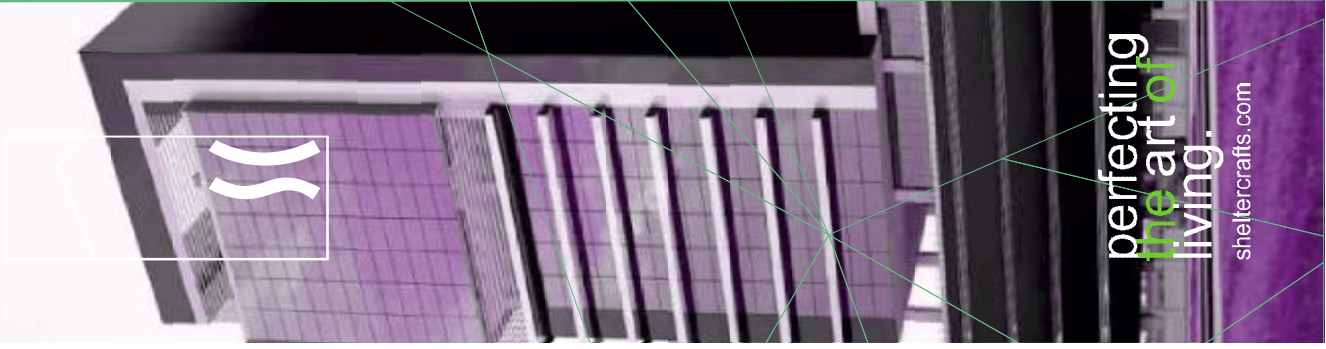
Mixed-Use Development
Bishop Oluwole, Victoria Island, Lagos



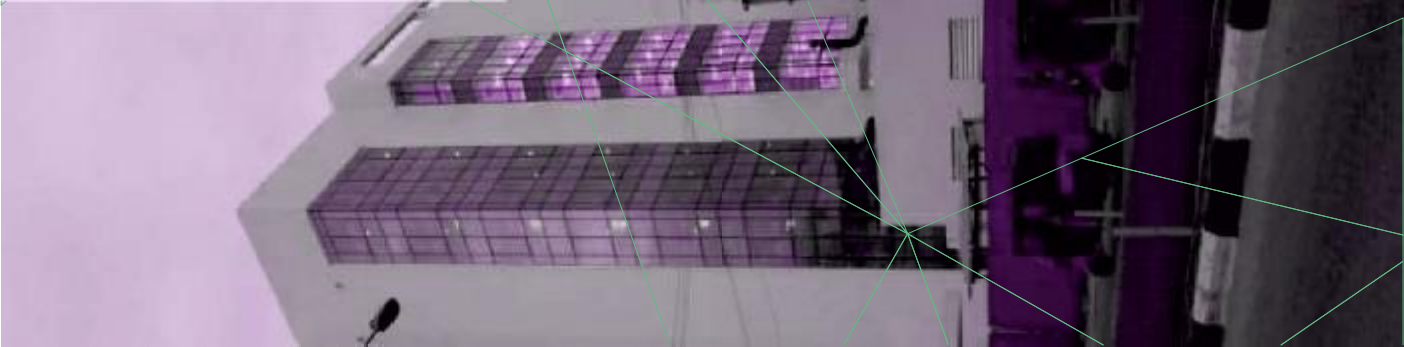
Established in 1999, originally known as Sheltercrafts Consults; Sheltercrafts Consultants Limited is a professional multi disciplinary consultancy practice, with extensive experience in the design and supervision of a wide range of building projects. In our 19 years of existence, we have grown to serve an increasingly diverse and extensive clientele in both the private and public sectors, handling various residential, commercial, industrial and transport projects across the country.

The firm is segmented into four work units of Architecture and Urban Design, Structural and Civil Engineering, Mechanical and Electrical Engineering, Cost Advisory and Project Management each headed by a director with Architecture and Urban design being three hub of Activities having two directors. The directors have wide range of experience, lead and are directly involved in our project design and supervision.

Introduction
www.sheltercrafts.com/aboutus

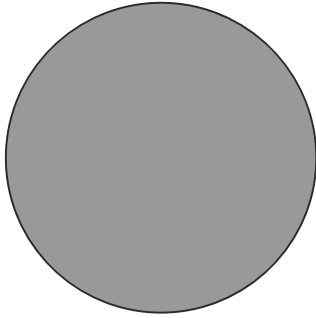


perfecting
the art of
living.
sheltercrafts.com



People

Akintunde Ayandosu
Managing Director



Akintunde is a graduate of Architecture from the Prestigious University Of Lagos, Nigeria. AKT as he is fondly called holds another certificate in Environmental Services from the same university and also a member of Nigerian Institute of Architects and Architects Registration Council of Nigeria. He has been the director of Sheltercrafts Consultants Limited since its inception.

AKT is a professional architect with over 20 years of managerial and leadership experience. AKT has a solid track record of innovative designs while exceeding expectations in project management.

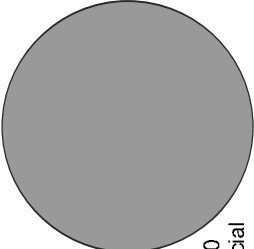
He started at Habitat Associates in Abuja when he was part of the team that delivered various residential estates for Central Bank Of Nigeria in 1994/1995. In 1995, he then moved to Adeniyi Coker Architects where he also worked with brands like UBA, Atlantic Royal Gardens etc.

In 1999 he branched out to create his own company to pursue his vision to create one of the leading architectural companies in the country; this vision gave birth to what is today known as Sheltercrafts Consultants Limited.

You can find more about Akintunde Ayandosu at sheltercrafts.com where he shares his thoughts on the built environment and best practices.

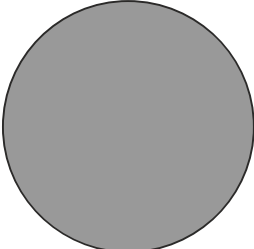


Atoloye Bolaji



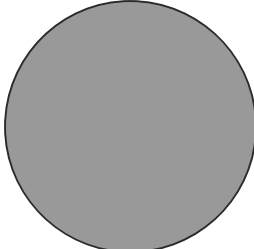
He heads the Structural and Civil Engineering unit at Sheltercrafts Consultants Limited. Bolaji has over 15 years practice experience in Civil and Structural Highway Engineering with expertise in Project management and project design. He has a Masters in Civil Engineering and also Bachelors in Technology and Civil Engineering. He was a Highway Design Consultant at Advance Engineering consultants where he worked for over 10 years. Bolaji has designed and supervised many Road, Commercial and residential projects.

Olasedidun Olusegun



He is a year 2000 graduate of Mechanical Engineering from Ladoke Akintola University Of Technology. Segun has many years of experience in building services engineering design, project supervision and project management. A member of the Nigerian Society of Engineers, he had worked on many projects in major firms before joining Sheltercrafts where he is the Director and Team Lead, Mechanical and Electrical Services at Sheltercrafts Consultants Limited.

Kolapo Adigun



He is a chartered quantity surveyor and project management professional with over 15 years experience in Project Cost Management, Construction and Business development. He has a degree in Quantity surveying and also a master's degree in Business Administration management from the University of Calabar. He is a member of Royal Institute of Chartered Surveyors, U.K. He is the Director and Team lead of Cost advisory and Project Management at Sheltercrafts Consultants Limited.



Commercial

sheltercrafts.com/projects/commercial



Five Floor Office Block Development
For Bode Adebisi Partnership



2500m² of office space spread over 4 floors with a pent house.
Completed 2011



Eko Events Centre

Proposed 5,000 capacity events centre for LASG



A 5,000 seater auditorium, seminar/meeting room, exhibition pavilion, ample parking on a beach.
Front plot in Okunode Tourism Zone.
Developed in conjunction with PW Construction for Lagos State.



Commercial



Grandview Resort
Business Hotel, Lekki



i A 64 room business hotel resort with accompanying, seminar/meeting rooms, office suites, events hall, located on a beachfront plot within Okunde Tourism Zone, Lekki, Lagos. At Tender stage.

Grandview Plaza
Mixed Use Complex, Magodo



i A mixed-use complex of an events hall on the ground floor, 2 levels of shops and a level of meeting rooms and office suites. Completed 2004.



Encounter House
Commercial Development, Magodo

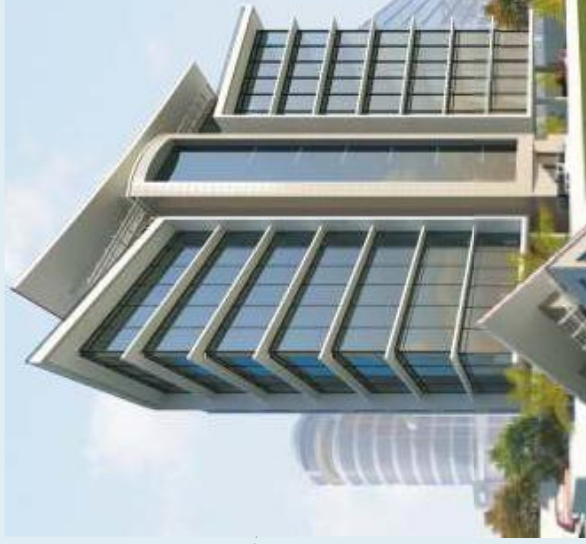


A four floor commercial complex deriving its form from the peculiarities of the site. Completed 2004.



Commercial

Mixed Use Development
Bishop Oluwole, Victoria Island



A Eight floor office block on Bishop Oluwole. Planning Approval/Tender Commencement Oct. 2012.



Kobel Allen
Office Development, Allen



i A five floor office development off Opebi-Allen Road, Ikeja.
Tender in process.

JOF Nigeria Ltd
Commercial Development, Kudirat Abiola Way



i A five floor commercial development with a roof deck along Kudirat Abiola Way, Ikeja.
Tender in process.

Commercial



Age Consult
Office Development, Akure



1 A three floor office development on Oba Adeshida Road, Akure, Ondo.



Commercial

Cornerstone
Commercial development, Abuja



1 A five floor commercial development with basement in FCT Abuja.



100 Pier Point
Office Development, Victoria Island



1 A eight floor office space development on Ajose Adeogun Street, Victoria Island, Lagos. Completed 2014.

NIESV
Headquarters, Abuja



1 Headquarters for Nigerian Institute of Real Estate Surveyors and Valuers, Abuja. Design sketch.



Bliss Hotel
3-Star Hotel Development, Onco



1 Proposed hotel development in Ijapo Estate, Ondo. Completed.

Lw Hotel
3-Star Hotel Development, Oko Oba, Lagos



1 Proposed hotel development in Oko Oba, Lagos.

Commercial



Industrial

sheltercrafts.com/projects/industrial



Factory 1, Multitrex Foods Plc
Industrial Development



i

Over 4450m² of industrial space developed and built in an 18 months working period. Commissioned for use in Feb 2006.

Factory 2, Multitrex Foods Plc
Industrial Development



i

Over 15000m² of industrial space developed and built in a 9 months working period with bot local and foreign consultants. Commissioned for use in Nov 2009.

Industrial



Rite Food Ltd
Industrial development, Ogun



1 Over 40,000m² of industrial space developed for Rite Food Limited, located along Sagamu-Benin Expressway, Ososa, Ogun. Currently under construction.



Industrial



Niger Biscuit Factory
Sagamu -Ikorodu Road, Ogun State



i Factory Development for Niger Biscuits Industries, Along Sagamu-Ikorodu Express, Ogun State
Construction in process.



Industrial



SECURE ID SECURITIES LTD.
Isolo, Lagos



Factory Development for Secure ID Securities Ltd Completed.



Factory Development for Secure ID Securities Ltd Completed.

Industrial



Residential

sheltercrafts.com/projects/residential



Oniru Apartments

Residential Development at Sinari Daranijo, Victoria Island, Lagos



Block of ten apartments with indoor pool and gymnasium located within Oniru Layout, Victoria Island, Lagos. Commenced construction April 2017

Private Residence

Commercial Development, Kudirat Abiola Way, Lagos



Residential Development at Orimolade Close, Ikeja, Lagos

Residential

Tumbul Condo
Residential Development at 28 Tumbul, Koyi, Lagos



A 10 apartment, 6 floor condominium of 4 different types of apartments crafted within a site of challenges and potentials. It's a signature development with distinct and bold architectural features.
Commencement Aug 2012.



Sinari Apartments
Sinari Daranjo, Victoria Island, Lagos



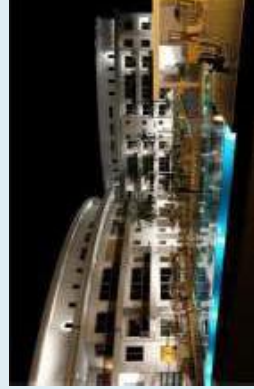
Block of seven apartments with indoor pool and gymnasium located on Sinari Daranjo, Victoria Island, Lagos. Completed.



Aqualina Apartments
Banana Island, Lagos



Luxury apartments in
Banana Island, Ikoyi.



Osborne Apartments
Osborne Foreshore, Lagos



Luxury residential
apartments in Osborne
Foreshore.
Tender in progress.



Iubirin Luxury Apartments
Iubirin, Lagos



Luxury residential
apartments in Iubirin,
Lagos.
Under construction.



Residential

I.O.G. Luxury Apartments
Banana Island, Lagos



Luxury residential apartments
in Banana Island.
Under construction.



Latin Square Luxury Apartments
Banana Island, Lagos



1

Luxury residential
apartments in Banana
Island, Lagos.
Under construction



Residential

Low Rise Condominium
Queens Drive, Ikoyi, Lagos



1

A low rise condominium of nine luxury
apartments located on a waterfront plot in
a serene area of Ikoyi, Lagos. It retains the
colonial character of its neighbourhood.
Completed Oct 2012.



5 MOG
Apartment Block, Ikeja, Lagos.



1 Block of twelve apartments in G.R.A. Ikeja. Completed 2015.



Low Rise Condominium
Queens Drive, Ikoyi, Lagos



1 Luxury flats development for Union Homes PLC on Alexander Road, Ikoyi, Lagos. Four interconnected blocks of luxury flats topped by well appointed pent house apartment.



Barthurst Apartments
Residential Development at Barthurst Road, Apapa, Lagos



Two rows of five terrace apartments
on Barthurst Road, Apapa, Lagos.
Commenced construction Dec 2012.



Residential Development at
Magodo, Lagos.
Commenced construction
Oct 2012.

Private Residence
Magodo, Lagos



Detached Homes
Residential Development, Lekki, Lagos



1 Six units of detached luxury duplexes in Lekki. Tender in process.

Charity Bayview
Luxury Residential Development, Lekki, Lagos



1 Eleven units of 3 Bedroom Luxury flats in Lekki, Lagos. Construction in process.



Transportation

sheltercrafts.com/projects/transportation



Ikeja Bus Terminal LAMATA



1 Bus terminal development for LAMATA along Simbiat Abiola Way Ikeja, Lagos State. Completed.



Transportation



Kogi Ultramodern Bus Terminal
Lokoja, Kogi



1 Bus terminal development for Kogi State Government, Lokoja. Completed.

Maryland Pedestrian Ring
Maryland, Lagos



1 Elevated pedestrian walkway located at Maryland by St. Agnes Catholic Church, Maryland, Lagos. Tender in progress.



Ojota Bus Terminal
Ojota, Lagos



1 Bus station development for Lagos State Government located on Kudirat Abiola Way, Lagos. Tender in process.

Residential

Marina Bus Terminal
Marina, Lagos



1 Bus station development for Lagos State Government located at Marina, Lagos. Tender in process.



Oworo Bus Terminal
Oworo, Lagos



I Bus station development for Lagos State Government located on Oworo, Lagos. Tender in process.

Iyana-Ipaja Bus Terminal
Iyana-Ipaja, Lagos



I Bus station development for Lagos State Government located at Iyana-Ipaja, Lagos. Tender in process.

